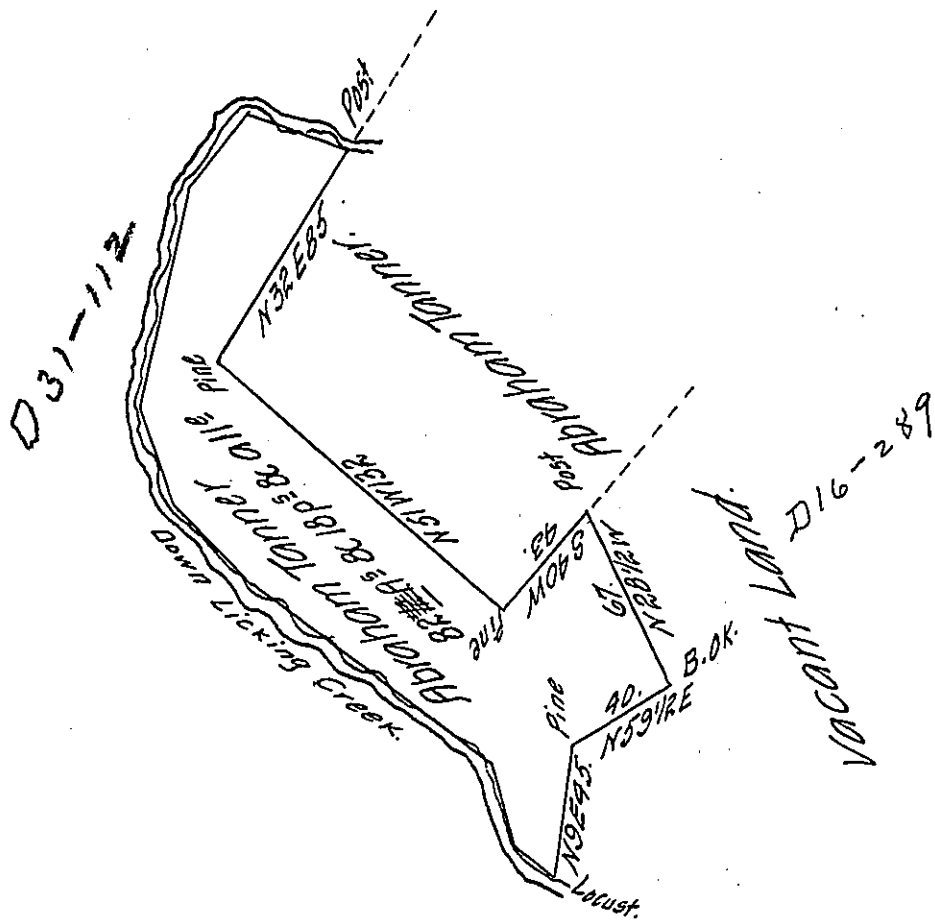


The Courses & Distances
down Licking Creek.

N66 W 36 pr.
 S40 W 34
 S11 1/2 W 78
 S19 E 33
 S44 1/2 E 40
 S55 E 103
 S18 E 30 1/2
 S32 E 16 to
 the Locust.

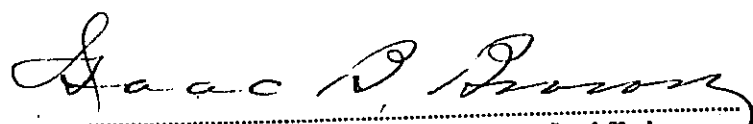


A Draft of a Tract of Land Situated on Licking Creek
 in Bethel Township Bedford County Containing Eighty two
 Acres & 18 p^t & allowance of Six p^t Cent for Roads &c.
 Surveyed for Abraham Tanner the 14th Day of March 1793.
 In Pursuance of a Warrant Dated December 3^d 1792.

George Woods Jun^r D. S.

To Daniel Brodhead Esq^r S. G.

IN TESTIMONY that the above is a copy of the original remaining on file in
 the Department of Internal Affairs of Pennsylvania, made
 conformably to an Act of Assembly approved the 16th day of
 February 1833, I have hereunto set my hand and caused
 the Seal of said Department to be affixed at Harrisburg,
 this sixth day of March 1907.


 Secretary of Internal Affairs.